

granary cottages

your home away from home

We aim to cater for the needs of all visitors and the following details set out what we provide. If you have any specific questions please feel free to call us and we will endeavour to help.

The cottages are approached from a courtyard. Luggage can be unloaded outside the cottages and parking is available in the courtyard. The courtyard is even with gravel and paved paths to front doors.

Outside the guest accommodation garden furniture is provided.

Public transport in the area – regular buses to Wotton-under-Edge and Chipping Sodbury/Yate pass the gate and there is a limited bus service to Bristol on the B4058 (quarter of a mile). Nearest railway station is Yate (approx 5 miles); a better rail service is available from Bristol Parkway (approx 10 miles).

Mobile phone reception varies according to provider. The nearest public telephone is a quarter of a mile away at the junction with the B4058.

All accommodation at Granary Cottages is ground floor. Most rooms have high ceilings and exposed beams. Floor coverings are a combination of wood/laminate and tiled. Furniture and rugs can be moved on request to increase accessibility.

All bedrooms have fitted wardrobes.

All dimensions approximate. Please ring to discuss any details or to request further information.

Granary Cottages Nos 1, 2 and 3

Oil fired central heating.

1 step up to doorway. Glazed door 80cm. Open plan sitting/dining/kitchen.

Glazed door. Full height window (standard window in Cottage 3)

Sitting area has 1 x two seater sofa, TV with remote control.

Kitchen worktop height 90cm. Standard oven door hinged at bottom.

Small dining table.

One double bedroom. Full height window.

Non-feather pillows and duvets with cotton/polycotton covers and linen.

Shower door 64cm wide, Shower cubicle (step up into tray). Toilet height 41cm.

All internal doors 72cm.

Granary Cottage No 4 (Annexe)

Oil fired central heating.

1 step up to doorway. Glazed door 85cm. Open plan bed/sitting room .

Glazed door. Window. Sitting area has 2 two chairs, TV with remote control.

Double bed. Non-feather pillows and duvets with cotton/polycotton covers and linen.

Shower room door 51cm wide, Shower cubicle (step up into tray). Toilet height 42cm.

Internal door 72cm.

Laundry Room

Shared laundry room is adjacent to cottages, distance 30m.

Step up to doorway; glazed door width 85cm.

1 standard sized washing machine. Standard size sink with drainer.

Airing cupboard. Ceiling mounted ainer.

Cowship Barn

Underfloor heating fuelled by air to water heat pump

1 step up to hallway. Glazed door 84cm.

Open plan sitting/dining/kitchen.

Kitchen worktop height 90cm. Standard oven door hinged at bottom. Dishwasher.

Patio doors – 2 Velux windows in roof

Step down to patio. Living area has one three seater sofa and single tub chair, TV with DVD and remote control, wood burning stove, dining table.

Door to bedroom width 80cm. Kingsize bed. Window.

Non-feather pillows and duvets with polycotton/cotton covers and sheets

Ensuite shower (wet room) door width 80cm. Entrance to shower area 85cm. Level shower area (suitable for wheelchair users).

Toilet height 49cm. Twin hand basins – one height 85 cm and one at lower height for wheelchair users/children 78cm.

Velux window in roof.

From hall:

Door to bedroom width 80cm. Ziplink bed(s) – either 6" (superking) double or 2 x 3" singles.

Non-feather pillows and duvets with polycotton/cotton covers and sheets.

Full height window and second window.

Ensuite bathroom door width 80cm. Toilet height 43cm. Standard bath with shower over.

Small window. Velux window in roof

Door to utility room width 80cm.

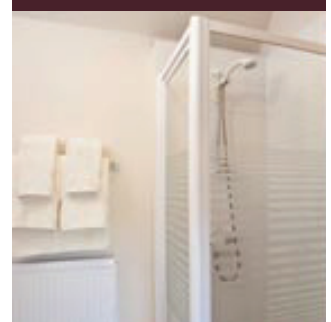
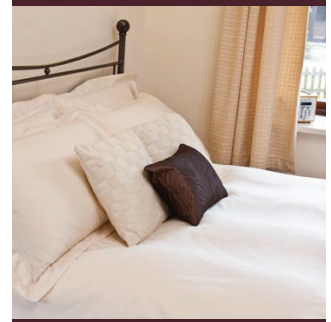
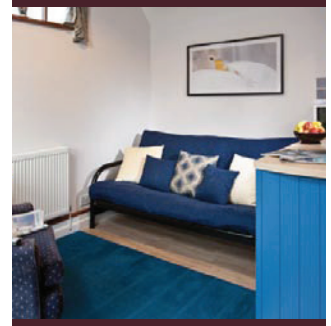
1 standard sized washing machine.

Standard sized sink with drainer.

Environmental

We are keen to reduce our impact upon the environment. The cottages have mostly low energy lighting and we recycle everything possible. The standard of insulation in all the cottages is high and we have installed an energy efficient air to water heat pump for the underfloor heating and hot water supply in Cowship Barn. With these simple measures, we hope to save money as well as reducing our environmental footprint.

We provide facilities for recycling paper, cardboard, glass, cans, plastic and foil, together with composting. Please can we ask you to continue your normal recycling while you stay at Granary Cottages. Please also be aware of saving energy – just turning off lights when not needed can make an enormous difference. Please let us know if you have any suggestions on other ways we can make out business 'greener'.



contact us
0044 (0)1454 261 316
e:info@granarycottages.co.uk